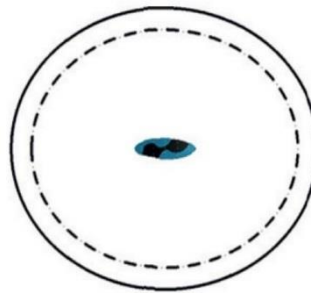
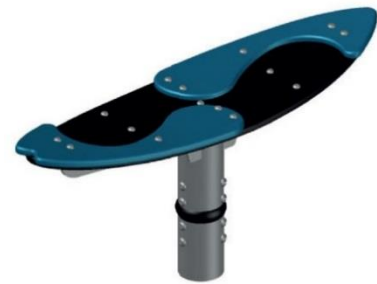


Swallow Tail – Product Specification



Swallow Tail

The Swallow Tail catches the waves easily. Like the Pin Tail it brings surfing into any location. The strong rocking mechanism is also suitable for a rough ride. Surfing is fun, especially for older kids with good body control and for young adults.

Swallow Tail – at a glance.

Product Family:	Playpoints	Number of Foundations:	1 pc.
Item Number:	90.260.920	Concrete Volume C20/C25:	0.5 m³ (18 ft³)
Children's Age:	5+	Number of skilled installers required:	2
Fall Height (DIN EN 1176):	0.5 m (1'-8")	Installation Time without foundation:	2 hours
Length x Width x Height:	1.0 m x 0.4 m x 0.5 m (3'-4" x 1'-4" x 1'-8")	Dimensions of largest part:	1.0 m x 0.4 m x 0.9 m (3'-4" x 1'-4" x 3'-0")
Protective Surfacing Area (DIN EN 1176):	4.3 m x 3.6 m	Weight of the heaviest part:	40 kg (89 lbs)
Protective Surfacing Area (ASTM 1487):	5.0 m x 4.3 m (16'-5" x 14'-2")	Shipping Volume:	1.0 m³ (36 ft³)
Minimum space required DIN EN 1176:	12.2 m²	Shipping Weight:	85 kg (189 lbs)
Minimum space required ASTM 1487:	16.6 m² (179 ft²)	Spare part guarantee:	Lifelong
		Certificate according to DIN EN 1176:	No.: Z2 15 07 10256 237 TÜV Product Service

Technical Data.

The following text can also be used for tenders.

Base plate:

Base plate made of HDPE panels, 1.0 m x 0.32 m (3'-4" x 1'-1")
19 mm (3/4") thickness

Covering:

Antiskid HDPE panels, 19 mm (3/4"), bolted on the base plate

Luffing mechanism:

Fully encapsulated rubber-metal-bearing integrated in
stainless steel foundation tube