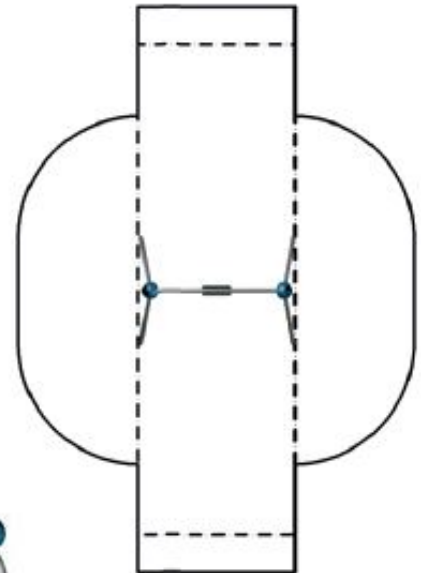


## Swingo.2.1 – Product Specification



### Swingo.2.1

The small one-seater-swing features the new organic UDB-design. A modern day swing doesn't have to be made from two A-frames and a horizontal beam.



### Swingo.2.1 – at a glance.

|                                          |                                                          |                                        |                                                          |
|------------------------------------------|----------------------------------------------------------|----------------------------------------|----------------------------------------------------------|
| Product Family:                          | <b>Playpoints</b>                                        | Number of Foundations:                 | <b>4 pc.</b>                                             |
| Item Number:                             | <b>90.260.501</b>                                        | Concrete Volume C20/C25:               | <b>0.6 m<sup>3</sup> (21.2 ft<sup>3</sup>)</b>           |
| Children's Age:                          | <b>3+</b>                                                | Number of skilled installers required: | <b>2</b>                                                 |
| Fall Height (DIN EN 1176):               | <b>1.3 m (4'-4")</b>                                     | Installation Time without foundation:  | <b>2 hours</b>                                           |
| Length x Width x Height:                 | <b>2.5 m x 1.7 m x 2.3 m<br/>(8'-3" x 5'-7" x 7'-7")</b> | Dimensions of largest part:            | <b>2.9 m x 0.9 m x 0.1 m<br/>(9'-7" x 3'-0" x 0'-4")</b> |
| Protective Surfacing Area (DIN EN 1176): | <b>7.6 m x 2.5 m</b>                                     | Weight of the heaviest part:           | <b>20 kg (45 lbs)</b>                                    |
| Protective Surfacing Area (ASTM 1487):   | <b>8.7 m x 6.1 m<br/>(28'-7" x 20'-1")</b>               | Shipping Volume:                       | <b>1.3 m<sup>3</sup> (46 ft<sup>3</sup>)</b>             |
| Minimum space required DIN EN 1176:      | <b>18.1 m<sup>2</sup></b>                                | Shipping Weight:                       | <b>120 kg (265 lbs)</b>                                  |
| Minimum space required ASTM 1487:        | <b>37.5 m<sup>2</sup> (404 ft<sup>2</sup>)</b>           | Spare part guarantee:                  | <b>Lifelong</b>                                          |
|                                          |                                                          | Certificate according to DIN EN 1176:  | <b>No.: Z2 15 06 10256 231<br/>TÜV Product Service</b>   |

### Technical Data.

The following text can also be used for tenders.

#### Framework:

Stainless steel tube bends Ø 60.3 mm (2 3/8"), connected to Frameworx®-aluminum ball connectors; Ø 250 mm (9-13/16"); anti-corrosion treatment and color finish: sandblasting and solvent-free zinc-/ epoxy-/ polyester-process; securely closed with durable EPDM-caps

#### Swing seat:

The black rubber safety swing seat is by stainless steel chains rotatable mounted to the cross tube mounted in maintenance free nylon bushes