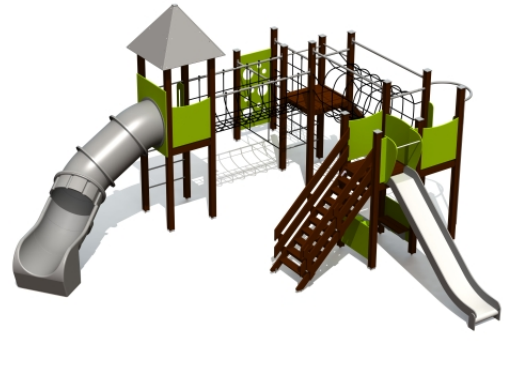


Product code: LM315 FORP PE

Multi Activity Centre SIMEON



1 y



1.92 m



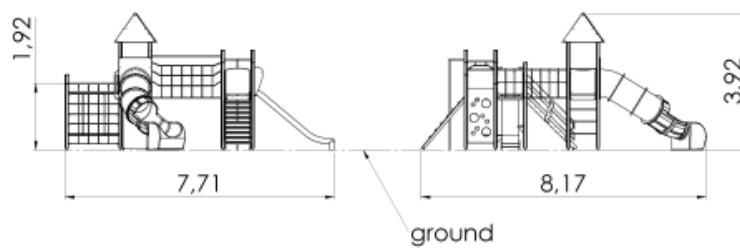
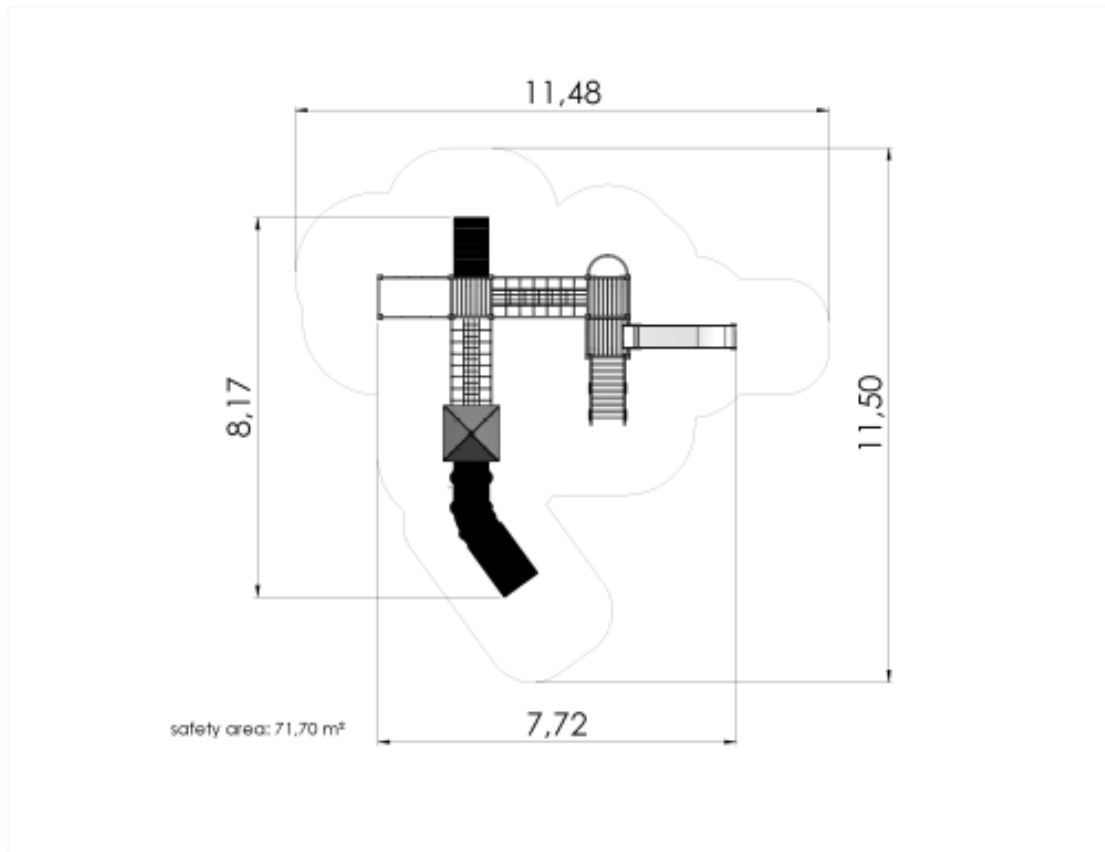
7.71 m



8.17 m



3.92 m



Technical information

Safety area width	11.48 m
Safety area length	11.5 m
Width of structure	7.71 m
Length of structure	8.17 m
Height of structure	3.92 m
Max. fall height	1.92 m
Recommended age of children	1+
For simultaneous use by several children	10-20

Product consists of

Platforms	2 pcs with a height 1.55 m Plastic covered laminated wood
Roofs	1 pcs HDPE plastic
Slides	1 pcs with a height 1.55 m Stainless-steel, HDPE plastic sides
Tunnel slides	1 pcs with a height 1.55 m Plastic
Climbing walls	1 pcs HDPE plastic
Climbing nets	2 pcs 16 mm six-strand PES cover braided steel ropes
Ladders	1 pcs Galvanized and powder-coated steel
Bridges	1 pcs
Tunnels	1 pcs Plastic
Slopes	1 pcs Plywood
Stairs with handrails	1 pcs Plastic covered laminated wood
Fireman poles	1 pcs Galvanized and powder-coated steel
Play corners	1 pcs Plastic and wood
Activity panels	1 pcs HDPE plastic
Posts	16 pcs Laminated wood

Installation info

Installers	2
Installation time	30 h
Volume of concrete	41 bags (25kg)
Package dimensions	3,2x1,1x2,2m

The product's painted profile posts made of laminated timber are concreted into the ground using hot-galvanized metal tubular fittings.

The product needs a safety surface