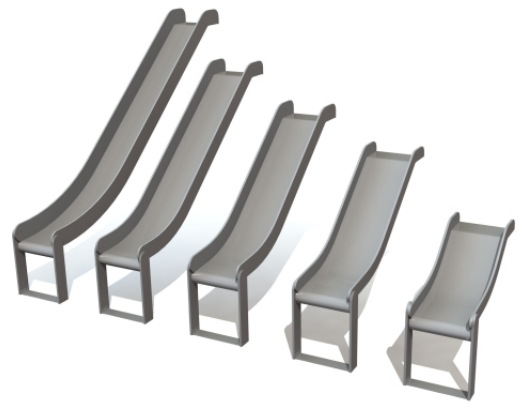


Product code: LIU1.55RV FORP MF

# Stainless steel slide: height 1,55m



1 y



1.55 m



0.5 m



2.8 m



## Technical information

Width of structure	0.5 m
Length of structure	2.8 m
Max. fall height	1.55 m
Recommended age of children	1+
For simultaneous use by several children	1+

## Installation info

Installers	2
Installation time	1 h
Volume of concrete	1 bags (25kg)
Package dimensions	2,8x0,54x0,4m
Package weight	42 kg

The product needs a safety surface

Recommended slide installation height 1.35 to 1.6 m.